

**BMV**

SPECIALTY VALVES & SERVICES

Control Valves  
Valve Automation  
Valve Services  
Instruments

[www.bmvcontrol.com](http://www.bmvcontrol.com)



# About Company

BMV is in the business of Valve Automation, Valve and Control Valve Supply & Services for the Manufacturing Industrial Plants from Power, Oil & Gas to General Industries in Vietnam and region. We are proud to be recognized as the leading vendor who is very focusing in Valve's knowledge in Vietnam.





**29 Years**

of working experience

**100+  
customers**

**100+ monthly**

orders from our costumers

**20+  
partners**

## HISTORY

**Year 1997:** Vietnam Process Technology Ltd., Represents Fisher-Rosemount as Service Representative, Brooks Flowmeters, L&J Tank Gauging, Goulds Pumps, etc

**Year 2000:** Represents Rotork Controls, ABB Field Instrument

**Year 2004:** Represents Emerson (exclusive till 2010), Bently Nevada, Cameron Valves, Ashcroft (temp/pressure gauges), etc

**Year 2013:** Partnership with Flowserve Control Valves

**Year 2016:** Separate and set-up a new team focusing in Valve Services, built the valve service organization

**Year 2017:** Form BMV to be focused in Valves and Valve Services in Vietnam and the region

**Year 2023:** BMV focused on expanding Valves and Valve Services in the Southern region of Vietnam



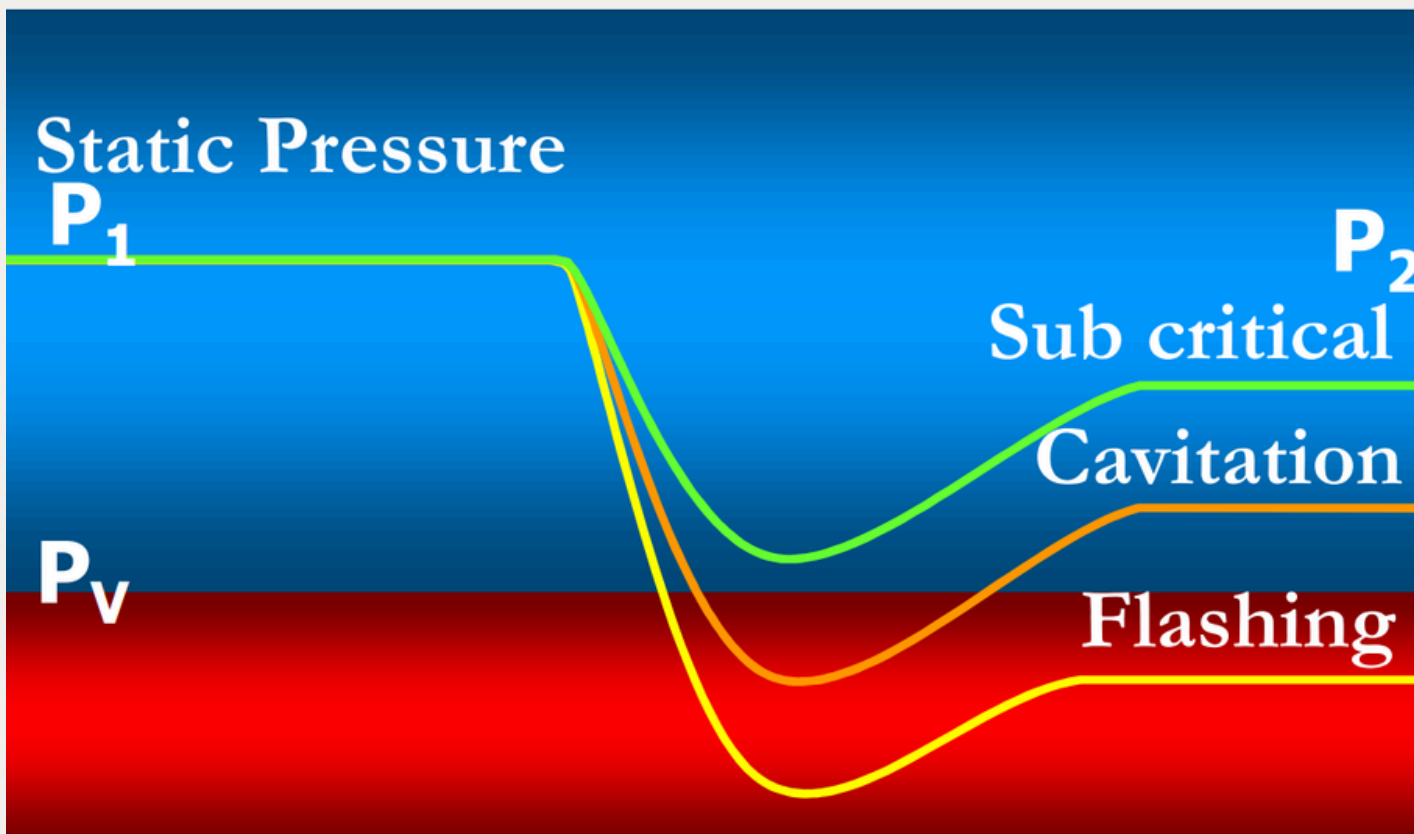
# Product Supply

All type of Control Valves, Automated Valves and it's system & accessories, included:

- Control Valves
- Shutdown Valves
- Positioner
- Severe Service Control Valves
- Measuring
- Actuator

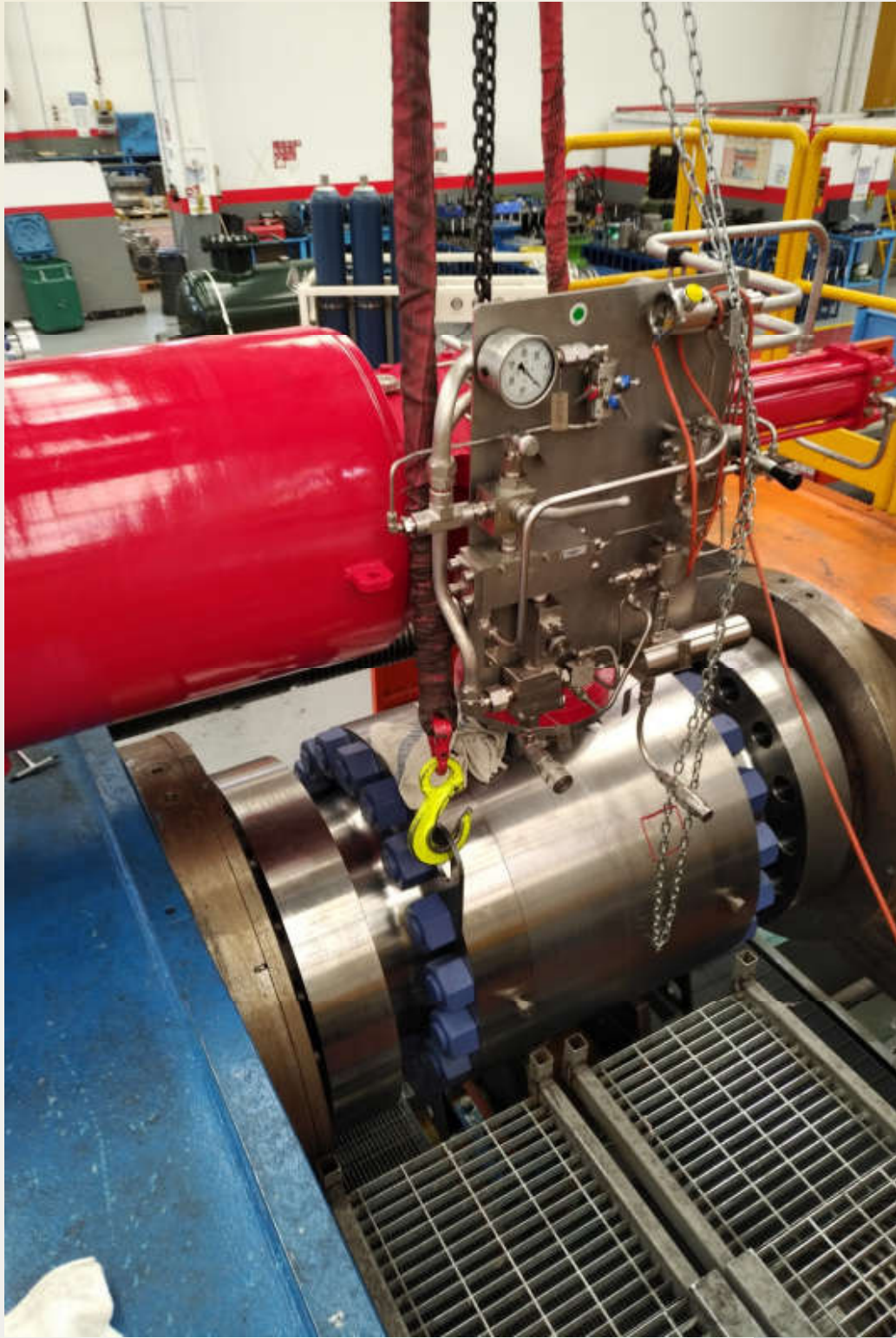


# CONTROL VALVE SUPPLY





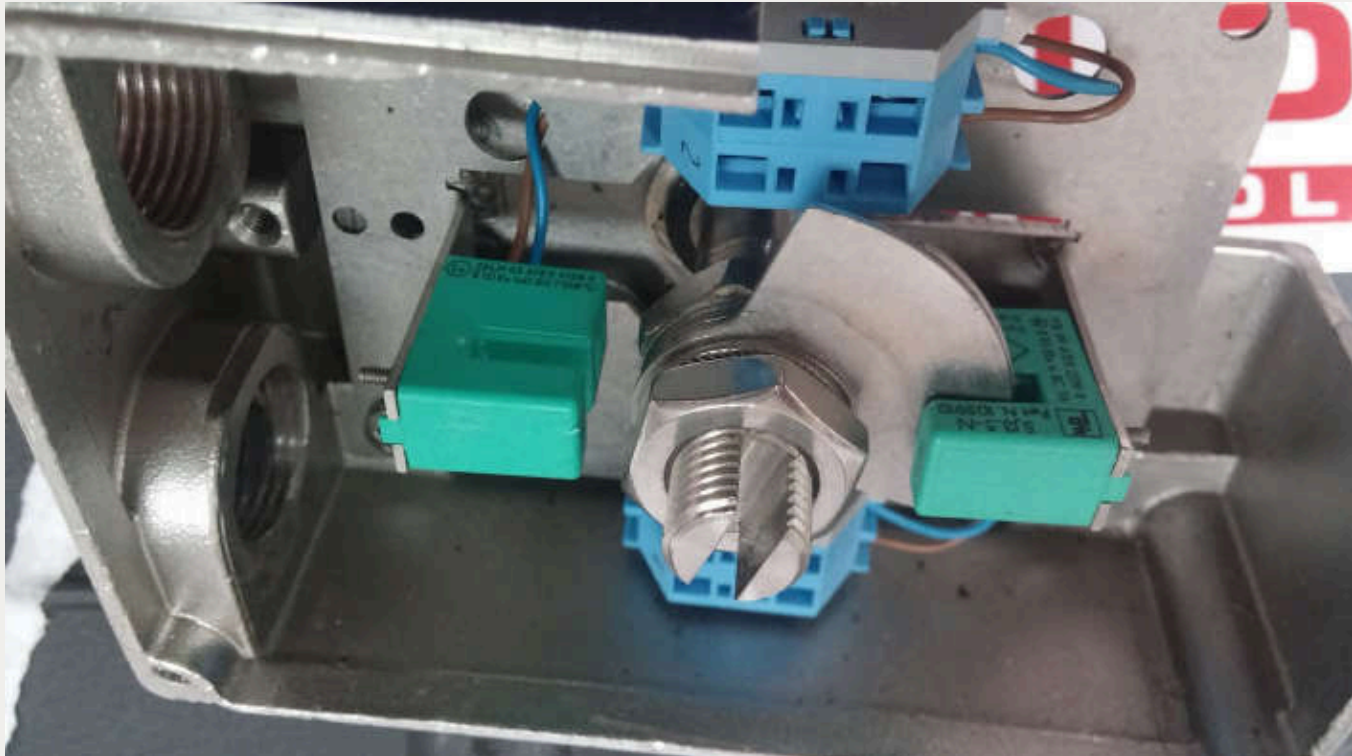
# ON/OFF VALVE / SDV SUPPLY



# ACTUATOR SUPPLY



# ACCESSORY SUPPLY





# Service Supply

**All type of Services for Control Valves, Automated Valves and it's system & accessories, included:**



- Valve Automation / Integration
- Valve Maintenance & Repair
- Valve Troubleshooting/Upgrading
- Operation & Maintenance Training
- Annually Maintenance/Repair
- Emergency Call-out Service
- Emergency Spare Part Back-up

# Workshop

- Main workshop in Hanoi with CNC machines for part machining and repairing and full service capability.
- Workshop in HCMC for valve repair and services up to 16 inches valves.





# TRAINING HAS BEEN DONE

## Fisher Controls (Emerson Process Management)



- Control Valve Engineering School #1: 2004 / Singapore
- Control Valve Engineering School #2: 2005 / Singapore
- Severe Service Control Valve Training: 2005 / KL Malaysia
- High Performance Control Valve Training: 2006 / Singapore
- Regulator Sizing & Maintenance: 2006 / Singapore
- Gas Regulating Skid Engineering & Maintenance (NGS): 2007 / Singapore

---

## Samson Controls



Control Valve General Training: 2010 / Frankfurt Germany

---

## RMG Regulator



Gas Regulating Skid: 2010 / KL Malaysia



# TRAINING HAS BEEN DONE

## Jordan Regulator



Regulator Sizing & Maintenance: 2012 / Singapore

## Flowserve (Valtek)



- Positioner Basic Training: 2014 / Singapore
- ValtekService Training: 2015 / Singapore
- Valve Sizing Training: 2015 / Singapore

## Rotork Controls



- Actuator Training: 2010 – 2012 – 2014 – 2015 – 2017
- Actuator's Accessories (Valve Instrument) Training: 2014 – 2018

## Serven Glokon

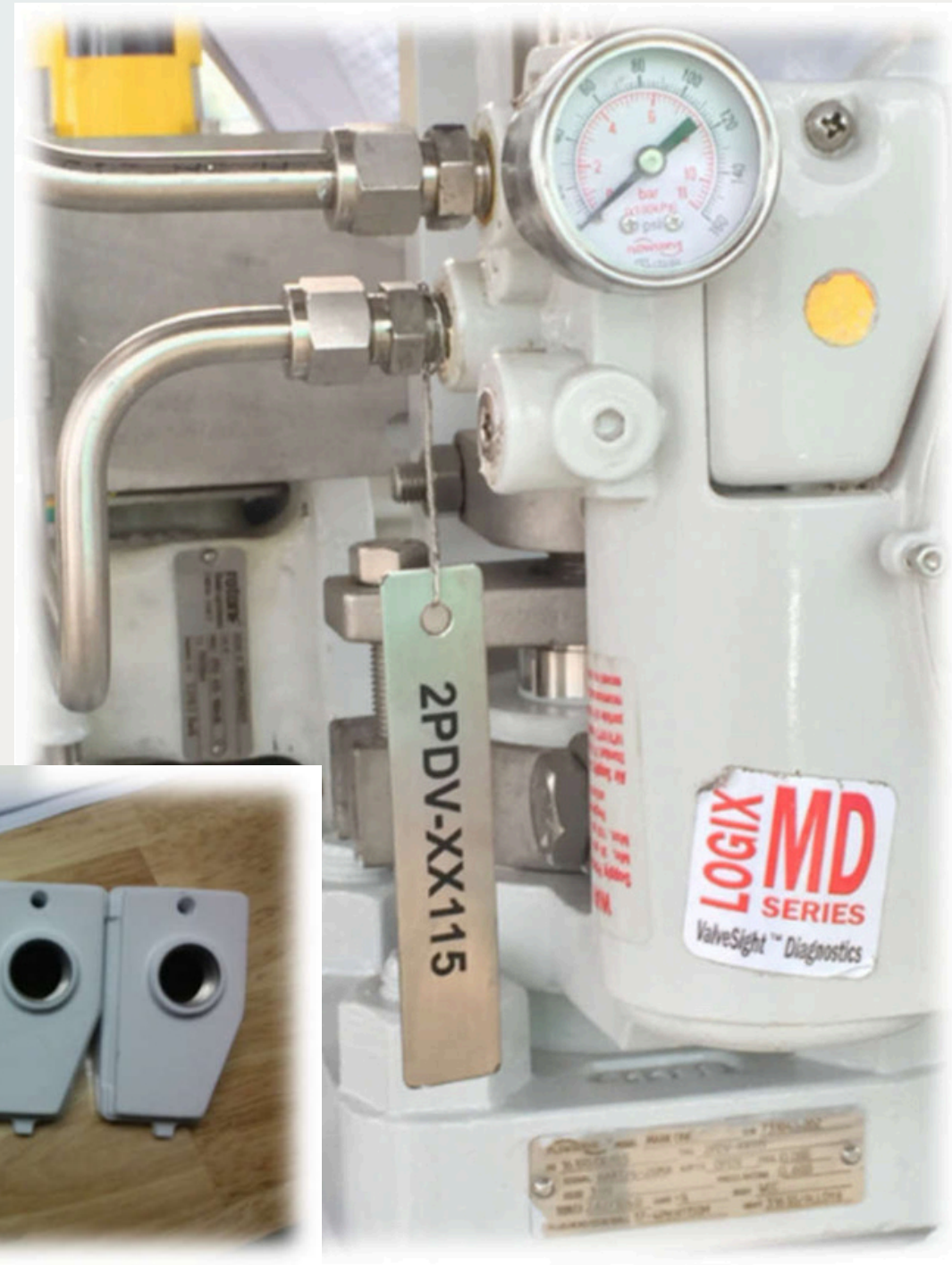


Severe Service Control Valve: 2017 / Hanoi Vietnam

# References/Case Study

## Control Valve Modifications / Flowserve / PTTEP Thailand

*Before*



*After*





# References/Case Study

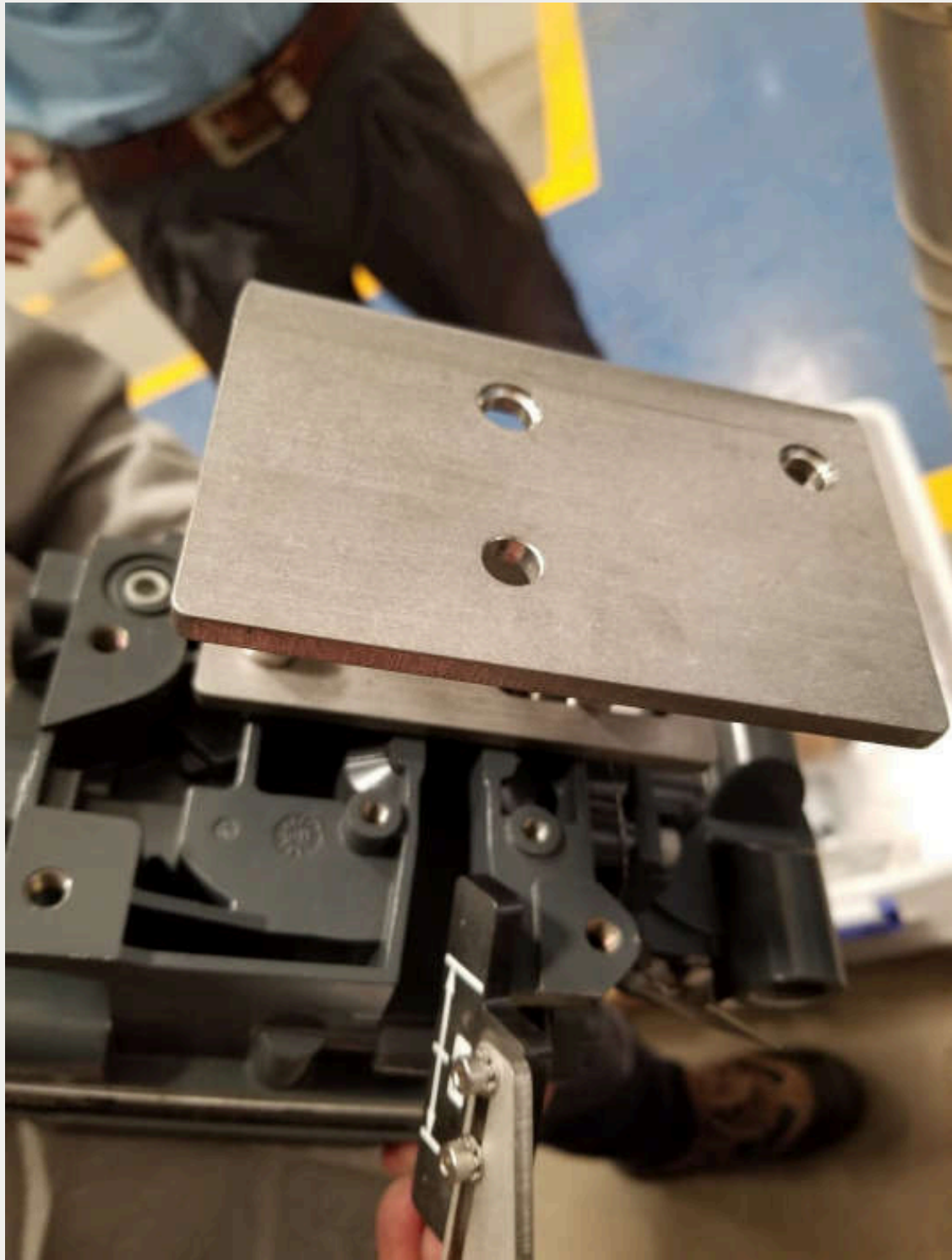
**Supply & Install Complete Valve System for Shell Vietnam**





# References/Case Study

## Mouting Kit Fabrication



# References/Case Study

**Control Valve Repair / Masoneilan 6" Class 2500 / SKEC / NSRP**



## Control Valve Hunting Problem Solving / Binh Son Refinery

*Thay thế linh kiện chính hãng*



Tag #	Valve	Size	Valve Specifications	Initial Reported Issue by JGC	Adjusted by client before Flowserve's	1st Checking by Flowserve	1st Adjusting by Flowserve (end Aug 17th, 2015)	Flowserve's confirmation on Result OK, checking by ValveLight = Good (command is fluctuating, Vlv position is stable, Vlv command position error is good)	Comment by JGC
025-FV-03		8"		hunting/tricky		YES, hunting	Swap the module, same, return it's original module. Gain set from E to A		Hunting at 0.4%, not accepted. Then, Andrew come to site saying Vlv is moving every 20 seconds, FC is moving.
025-FV-203	72443.01	7"	Starguard/SingleLive-Loaded	hunting/tricky	Loosen the packing as the manual		Adjust the packing, Adjust the Gain/H-Friction		still not smooth travel
025-FV-03	(top critical vlv)	15"		hunting/tricky		no hunting		Good Value	Value is spike sometimes = Not accepted
025-PV-22	72443.02	4"	PIFEGlass V-ring/SingleLive-Loaded	hunting/tricky	Did nothing		Adjust the packing, Adjust the Gain/H-Friction		still not smooth travel, especially from 70-80% opening
025-FV-201		7"		hunting/tricky		no hunting		Good Value	
025-FV-204		7"		hunting/tricky		no hunting		Good Value	
025-PV-004		4"		hunting/tricky		no hunting		Good Value	
025-PV-001				hunting/tricky		no hunting		Good Value	




## Electric Actuator Overhaul / Binh Son Refinery Turn Around 2014



10 Range **Service Check List**

Automatic Controls				Tested By / Dated
4mA Signal	Actuator Position 0%	Actuator Position 100%		
20mA Signal	Actuator Position 100%	Actuator Position 0%		
12 mA Signal	Actuator Position 50%			
Deadband	%	PASSED		
MT	sec	PASSED		
CPT	Close Position	4mA	20mA	
	Open Position	20mA	4mA	

Actuator Re-Assembly		Fitted By	Dated
M1	Install hand-wheel level to gearbox		
M2	Tie and ensure the worm-wheel fit snugly into output flange/worm-wheel after fitting		
M3	Fit the thrust base to gear base, ensure the grip screw hole is located at the hand-wheel lever side. Tightened the base cap-screws		
M4	Lightly oil the column and stop in the worm-wheel. Drop in the thrust pad and tighten the cap screws. Install the yoke, followed by clutch ring and drive shaft. Lightly oil the clutch ring's sliding and washer. Compress the assembly, secured by new O-ring		
M5	Lightly grease the frame path of the motor housing. Ensure the O-ring is in place. Install the Motor assembly and tighten the cap screws. Reconnect motor and thermostat cables. Ensure cable/terminals are properly secured by cable ties		
M6	Insert the torque Plunger. Install the switch mechanism and tighten the cap screws. Reconnect cable to respective switch banks. Replace cable lug as necessary. Calibrate the switch banks, check switch mechanism's lock operation. Replace indication bulb's		
M7	Replenish gear oil and Refit the hand-wheel		
M8	Apply anti-seize compound on the inside of bush retainers. Insert the drive bush. Note the bush position. Tightened the retainer and grip screw		
E9	Electrically run the actuator. Ensure correct phase rotation. Function check all auxiliary switches and torque limit switches operation.		
M10	Lightly grease the frame path of the pushbutton cover. Ensure the O-ring is in place. Refit the cover and tighten the cap screws		
M11	Lightly grease the switch mechanism cover's frame-path on the gearbox. Ensure the O-ring is in place. Refit switch mechanism cover and tighten the cap screws		
M12	Lightly grease the frame path of the electrical back cover. Ensure the O-ring is in place. Refit the cover and tighten the cap screws		



# Installation, Inspection and Loop test & Commissioning





# BM VENTURES LLC.

No 39, 37-CL Road, Cat Lai Ward, Thu Duc City,  
700000 HCMC S.R.Vietnam



[www.bmvcontrol.com](http://www.bmvcontrol.com)



(+84) 939 35 93 39



[trung.nv@bmvcontrol.com](mailto:trung.nv@bmvcontrol.com)